

GLA-Data

GLA-Data is a comprehensive, web-accessible environmental database management system (DMS/DBMS) developed by DBS&A to store, visualize, map, manage, and report environmental data.

HIGHLIGHTS

Key features include:

- Dashboard style user interface through a web browser
- Map-based geographic information system integration
- Interactive data visualization tools
- Automated reporting capabilities
- Multiple data export options
- Tiered login credentials for enhanced security
- 24/7 downtime monitoring
- Routine security updates and backups

Since 2007, DBS&A has been a leader in the development of environmental DMS/DBMS. Our developers have continuously enhanced our systems, incorporating new technology to meet clients' evolving needs. GLA-Data now serves more than 20 clients across the western U.S.

GLA-Data helps our clients make vast amounts of technical data readily accessible and easy to analyze. The system is intuitive and user-friendly. New applications based on our existing platform can be rolled out quickly at a reasonable cost.

The screenshot displays the Owens Basin Web Application interface. The browser address bar shows 'owens.gladata.com/#'. The interface includes a navigation bar with 'SIGN IN' and 'ABOUT' links. A sidebar on the left contains a 'Map Layers' panel with the following sections:

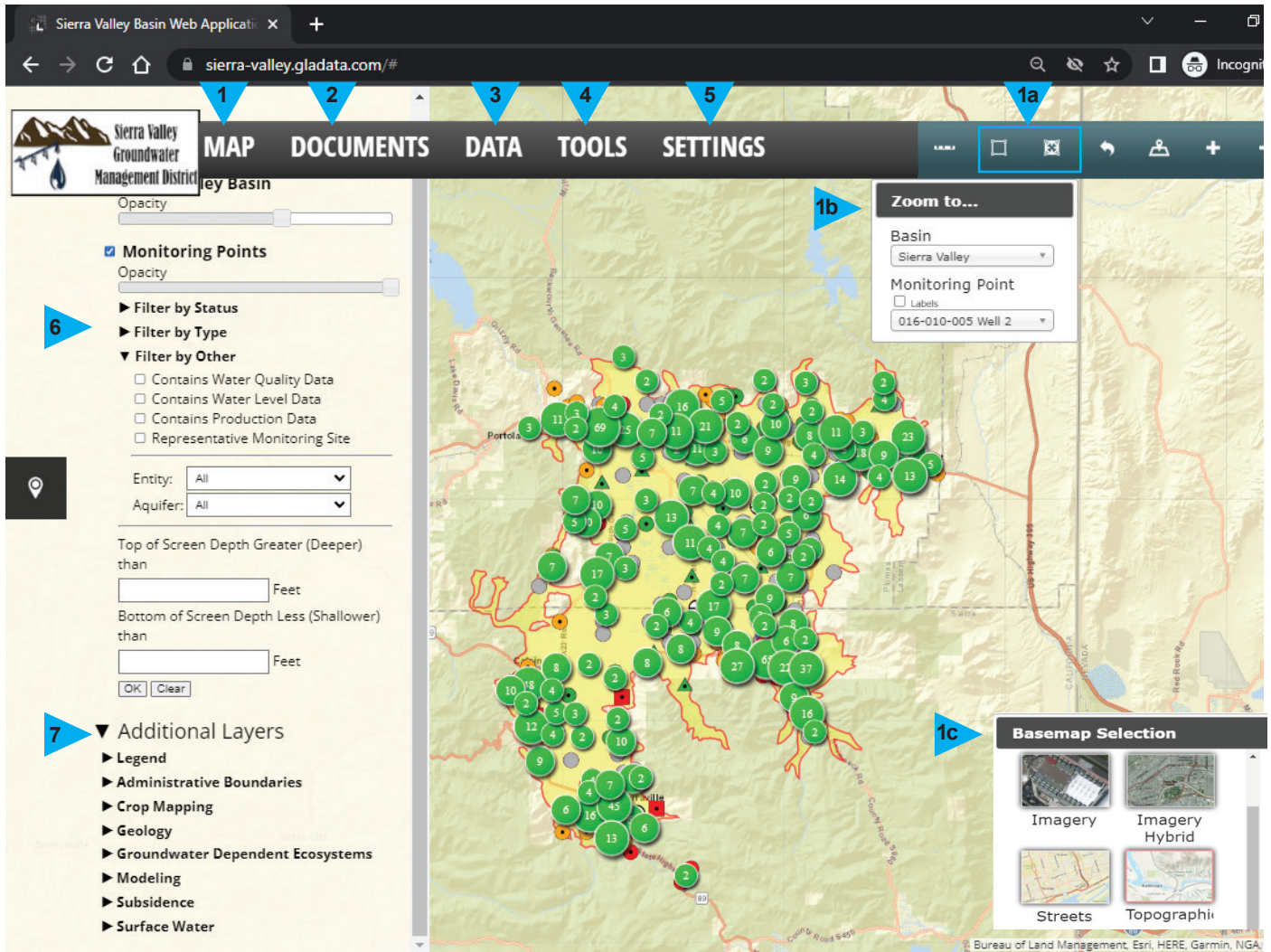
- ▼ Map Layers
 - Owens Basin
 - Opacity: [Slider]
 - Monitoring Points
 - Opacity: [Slider]
 - ▶ Filter by Status
 - ▶ Filter by Type
 - ▶ Filter by Other
- Top of Screen Depth Greater (Deeper) than: [Input] Feet
- Bottom of Screen Depth Less (Shallower) than: [Input] Feet
- [OK] [Clear]
- ▼ Additional Layers
 - ▶ Legend
 - ▶ Administrative Boundaries
 - ▶ Crop Mapping
 - ▶ Geology
 - ▶ Groundwater Dependent Ecosystems
 - ▶ Modeling
 - ▶ Other
 - ▶ Soils
 - ▶ Surface Water

The main map area shows a topographic map of the Owens Basin with numerous green circular monitoring points, each labeled with a number. A 'Zoom to...' popup is visible, showing 'Basin: Owens' and 'Monitoring Point: 01S32E29D001M'. A blue box on the map indicates a zoomed-in area. The bottom of the screenshot features a dark blue banner with white text: 'GLA-Data reduces data entry and associated quality control requirements, provides easy-to-use data output and graphing functions, and provides real-time access to data.'

¹ GLA-Data was named in recognition of the research and development investment made by our parent company, Geo-Logic Associate (GLA).

GLA-Data Customizable Features at a Glance

GLA-Data is customizable, user-friendly, widely accessible, and secure.



- 1 Map-based front-end, with interactive tools
 - 1a Spatial queries
 - 1b Zoom to known wells/monitoring points
 - 1c Basemap selection
- 2 Document and photo library indexed to wells/monitoring points
- 3 Ability for authorized users to upload, modify, and bulk download data
- 4 Standard and/or customized reporting and advanced graphing tools
- 5 Manage database settings, regulatory values, and user information
- 6 Filter points displayed on map by associated data and/or attributes
- 7 Overlay public and/or custom spatial data stored in online Representational State Transfer servers

8

Item Details

Monitoring Point: Calpine Well 2
[View Extended Details](#)
[View Monitoring Point Interface](#)
[Zoom](#)

Region: CA DWR Sacramento River
Basin: Sierra Valley
Aquifer: Bedrock
Monitoring Point Name: Calpine Well 2
Entity: Sierra County Water Works District #1 (Calpine)
Type: Municipal Well
Status: Active
State Well Number:
Historic Well ID:
Notes: GSE estimated from DEM
Latitude: 39.665162
Longitude: -120.444127
Top of Screen Depth (ft):
Bottom of Screen Depth (ft):
Other Screen Intervals:

9

Extended Details - 04N19W33D04S

General Info
Analytical Results
Levels
Production
Documents

Show entries Search:

Date	Depth from RP	RP Elev	Depth from Surface	GW Elev	Note
1972-10-09	12	477.9	10.94	465.9	
1973-02-23	7	477.9	5.94	470.9	Source: VCWR 7-98, Questionable Measurement Qualifier: Nearby pump operating
1973-04-06	7.9	477.9	6.84	470	Source: VCWR 7-98, Questionable Measurement Qualifier: Nearby pump operating
1973-12-07	6.7	477.9	5.64	471.2	
1974-04-05	8.7	477.9	7.64	469.2	
1974-05-29	10.7	477.9	9.64	467.2	
1974-10-14	9.6	477.9	8.54	468.3	
1974-11-25	9.9	477.9	8.84	468	
1975-05-21	10.5	477.9	9.44	467.4	
1975-11-21	14.7	477.9	13.64	463.2	

Copy
Excel
PDF
Print
Previous
1
2
3
4
5
...
44
Next

Elevation
Depth

Hydrograph - 04N19W33D04S

Note: Zoom Graph Area by Dragging Mouse

- - Water Level Measurement
- - Questionable Result
- Minimum Threshold
- Measurable Objective

10

8 Display attribute data by selecting the point on the map

9 Searchable and sortable tables

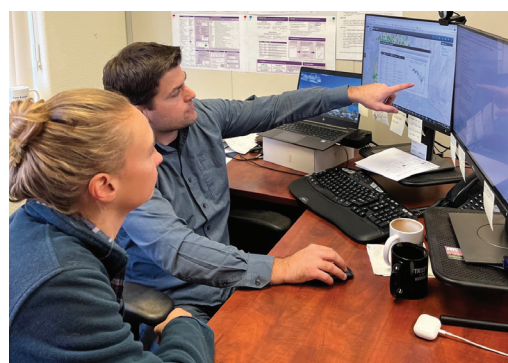
10 Interactive and exportable plots

11 Ability to export data into multiple formats

Features and Benefits

User-Friendly

- Web-accessible and searchable DBMS
- Map-based system (i.e., GIS map-based interface)
- Remote data entry from a computer, tablet, or mobile device
- Data import and collection using online forms and documentation
- Custom tools and queries to support permitting, monitoring, and reporting to outside agencies
- Easy data output, reporting, and graphing functions



Based on existing GLA-Data sites, we can roll out new applications quickly and affordably.

Accessible

- Every user can access the same information simultaneously or individually from their desktop or mobile device using most web browsers, including Mozilla Firefox or Chrome
- No additional software will be required for an individual's personal computer or work station

Secure

- Password-protected, multi-user-level access with login functionality to limit or restrict user access to sensitive data
- Internal users have the ability to manipulate or perform quality assessment/quality control of water well data, and view and edit user accounts

APPLICATIONS

Custom applications with specialized features include:

- **Sustainable Groundwater Management Data Management Systems (DMS)**
Reporting, compliance, and stakeholder support for Groundwater Sustainability Plans for California Groundwater Sustainability Agencies
- **Well Data Management**
Online well registration, permitting, and reporting for groundwater districts and large landholders
- **Water Quality/Environmental Data Management**
Water quality management and reporting for landfills, waste disposal sites, and Superfund sites
- **Litigation Support**
Management of data for environmental litigation and dispute resolution
- **Groundwater Banking**
Tracking complex water rights transfers and trades across basins for water banks

VISIT LIVE GLA-DATA WEBSITES

[Fillmore and Piru Groundwater Basins GLA-Data site](#)

[Sierra Valley Groundwater Basin GLA-Data site](#)

[Owens Valley Groundwater Basin GLA-Data site](#)

[Big Valley \(Lake County\) Groundwater Basin GLA-Data site](#)